

Experience Tech Program Review

Graduate Student Government

October 21, 2013

<http://www.mtu.edu/student-affairs/interests/experience-tech/>

Discussion Topics

- Current Experience Tech offerings
- Experience Tech statistics
- Discussion

Current Fee Distribution

\$30.19 for Mont Ripley

\$10.78 for Portage Lake Golf Course

\$4.31 for Intramurals

\$5.39 for Visual & Performing Arts

\$10.78 for Athletics (Hockey)

\$5.39 for Gates Tennis Center

+ \$2.16 for Student Affairs (OAP, Wellness, etc.)

\$69 Fee/Semester*

* Students do not pay this fee during the summer

Mont Ripley Ski Hill

What are the benefits?

- Unlimited free lift tickets to the ski hill
- One 50% discount on a one-day ski or snowboard equipment rental

How much does it usually cost?

- \$40 for a full-day pass or \$33 for a half-day pass
- \$28 for a full-day alpine ski or snowboard equipment rental
- \$22 for a half-day equipment rental

Portage Lake Golf Course

What are the benefits?

- Unlimited free access to the golf course
- Golf club rentals for \$5

How much does it usually cost?

- \$38 for 18 holes, \$22 for 9 holes
- Golf club rentals for \$15

Intramural Sports

What are the benefits?

- Free intramural sports – no entry fees

How much did it cost?

- Students used to have to pay for each intramural sport they wanted to participate in
- Costs used to range from \$10 per person up to \$100+ per team depending on the sport

Outdoor Adventure Program/Wellness

What are the benefits?

- Guided trips, leadership training, info sessions, equipment rentals
- Free 1-day snowshoe rental
- Week of Wellness, Health Fair
- Bigfoot Snowshoe Event, Stress-Free Finals Activities
- Annual Blood Drive vs. NMU
- Wellness presentations & workshops

How much does it usually cost?

- Snowshoe Rental: \$9 (MTU-affiliated) \$12 (Community)

Gates Tennis Center

What are the benefits?

- Free access to the indoor tennis courts

How much does it usually cost?

- A full year membership typically costs \$275
- Hourly rates (per person):
 - Doubles \$5
 - Singles \$10

Husky Hockey/MacInnes Ice Arena

What are the benefits?

- Free hockey tickets to first 750 students
- Discounted hockey tickets beyond 750 (\$5 each)
- Free open skating
- Graduate student family seating (tickets given in advance)

How much does it usually cost?

- Hockey tickets typically cost \$15-17 per game
- Open skating used to cost \$4 each time you went

Visual & Performing Arts

What are the benefits?

- Free admission to VPA performances
- One free admission to VPA performances for non-students (i.e. spouse, friend, etc.) up to 26 per year

How much does it usually cost?

- Community member costs vary by performance
 - Typically around \$13
 - Example: Brighton Beach Memoirs (playing this week) costs \$13 per adult general admission ticket

Student Spouse/Partner & Dependent Benefits

- Spouse/partner & dependent benefits cards are \$5 at the SDC office
- Grants your spouse/partner & dependents access to some of the same events you go to
- Find out more info here:
https://www.aux.mtu.edu/techx/Student_Spouse-Dependents.pdf

Student Spouse/Partner & Dependent Benefits

- Free admission to:
 - Basketball games
 - Football games
 - Volleyball games
 - Soccer games
- Hockey season tickets \$175 (significant discount)
- Individual hockey ticket for \$5
- Free admission to open skate
- Discounted SDC memberships
- Free intramural sports entry fees (spouse/partner only)

Student Spouse/Partner & Dependent Benefits

- Discounted Golf memberships
- Free golf access for children 11 or younger
- One free snowshoe rental from OAP
- Free admission to VPA performances
- 50% discount every time @ Mont Ripley
- Discounted Gates Tennis Center memberships
- 50% discounts on Tennis Center hourly rates & rentals
- 50% discounts for Recreational Trails memberships

Statistics

Experience Tech Program Usage 2012-2013

	Undergraduate	Graduate
Total Usage	28,344	2,028
Fall 2012 Enrollment	6,945	1,322

“Total usage” is the total number of “swipes” or admissions from all of the students in a group. The total usage numbers do not include data for venues that cannot collect this information or for venues whose season is still ongoing.

Experience Tech Program Usage 2012-2013

	Undergraduate	Graduate
Mont Ripley	10,551	1,421
Ski/Snowboard Classes	3,130	150
Tennis	N/A	N/A
Intramural	12,039	457
Golf	N/A	N/A
Golf Classes	N/A	N/A
OAP	125	7
Visual & Performing Arts	2498	199



Survey - Spring 2013

Undergraduate and Graduate Students were surveyed

30% of each population were asked to participate

1767 students total

1476 Undergraduate students

291 Graduate students

446 students responded

372 Undergraduate students (84%)

70 Graduate students (16%)

46 International students (10%)

401 Domestic students (90%)

Have you heard of Experience Tech?

Overall, 90% of the students said they have heard of Experience Tech

This 90% were....

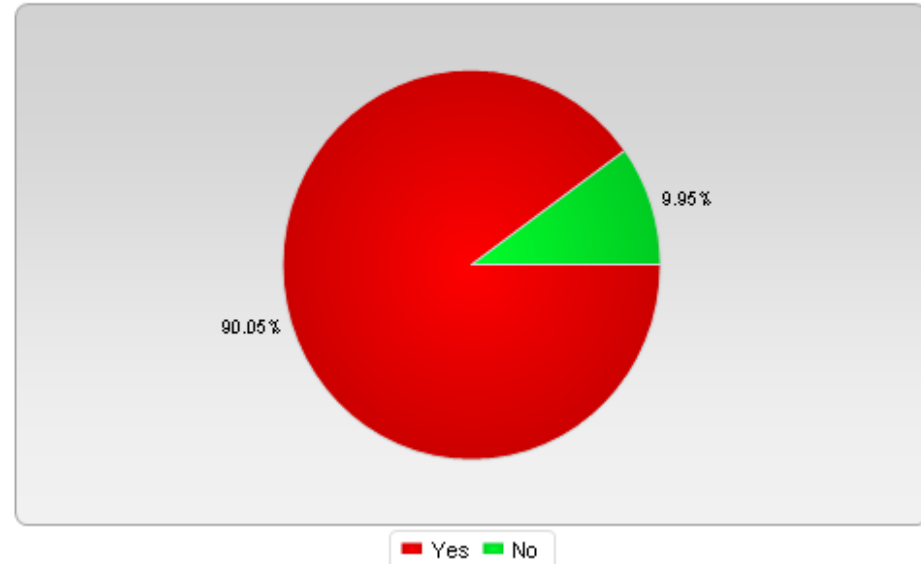
325 Undergraduate students (325/372)

52 Graduate students (52/70)

31 International students(31/46)

92 Domestic students (92/401)

Q13. Have you heard of Experience Tech?



How did you find out about Experience Tech?

Overall , and for

Undergraduate Domestic Students,
students say *(in rank order)*...

1. Admissions
2. Another student
3. Website

Graduate students say

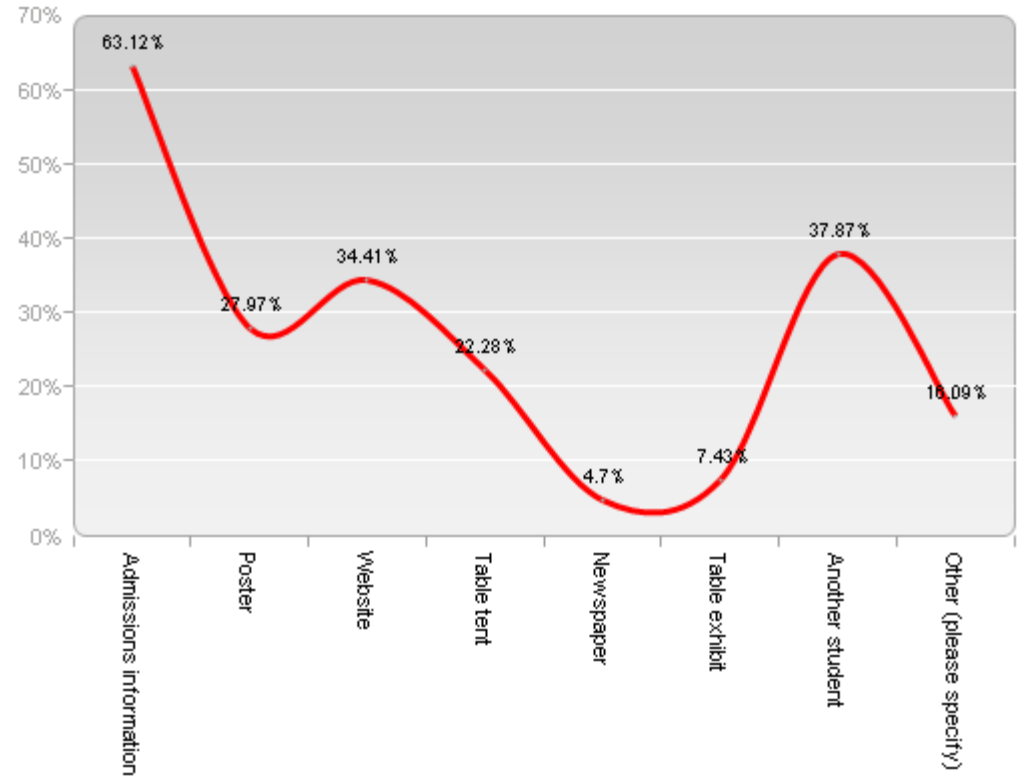
1. Admissions
2. Other*
3. Website

International students say

1. Website
2. Admissions
3. Another student

(Other = GSG, email, student bill, RA, orientation, and the venue)

Q14. How did you find out about Experience Tech? (Check all that apply)

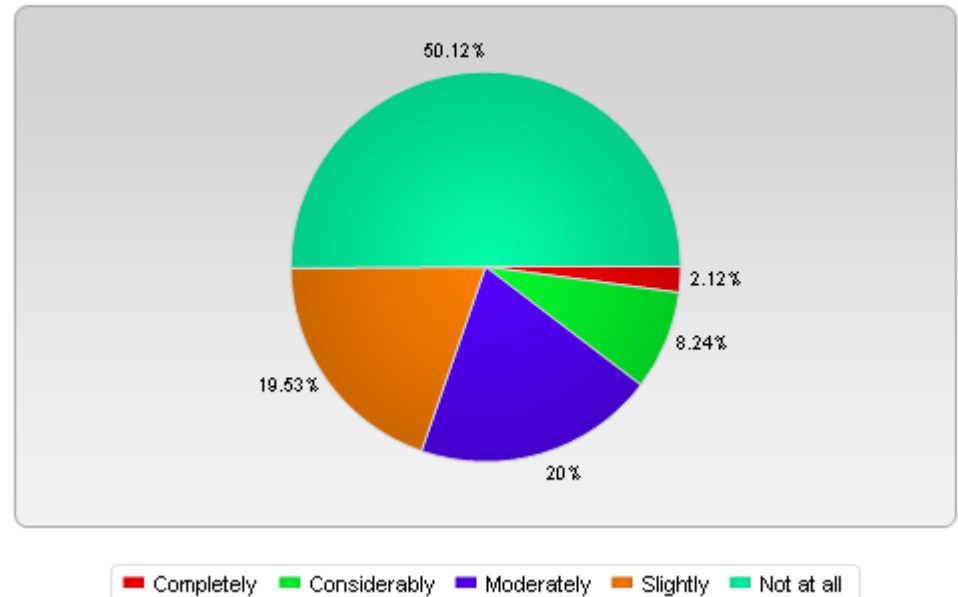


To what extent did Experience Tech influence your decision to attend Michigan Tech?

Overall, its about 50/50 that the Experience Tech program influences a student's decision to attend Michigan Tech.

	Yes	No
Undergraduate	189	165
Graduate	21	47
International	19	24
Domestic	193	189

Q15. To what extent did the Experience Tech program influence your decision to attend Michigan Tech?



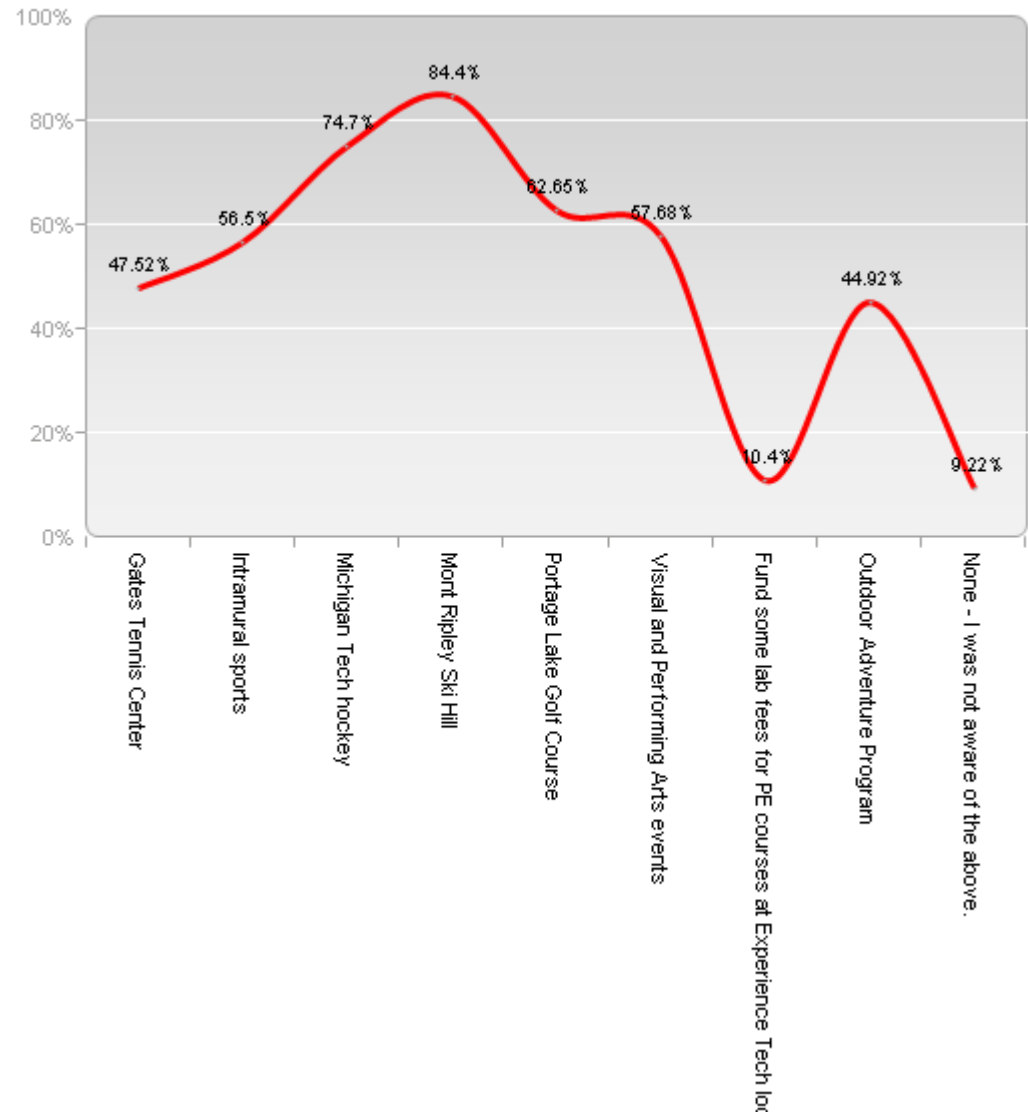
Prior to receiving this survey, which of the following were you aware Experience Tech included?

Overall, students say they were most aware of (*in ranked order*)....

1. Mont Ripley Ski Hill
2. Hockey
3. Portage Lake Golf Course
4. Visual & Performing Arts Events
5. Intramural Sports

This is the same ranking for all populations.

Q16. Prior to receiving this survey, which of the following were you aware Experience Tech included? (Check all that apply)



Is the cost of Experience Tech worth the value you gain?

Overall students say

45% value greater than cost

27% value and cost equal

28% cost higher than the value

Value greater than cost

Undergraduate	166
Graduate	20
International	9
Domestic	177

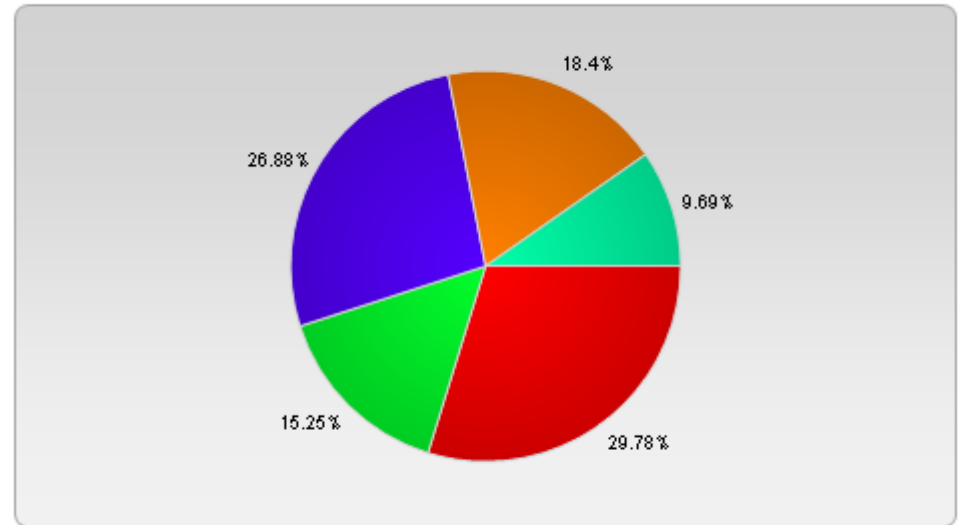
Value and cost equal

Undergraduate	92
Graduate	16
International	11
Domestic	100

Cost higher than the value

Undergraduate	86
Graduate	30
International	21
Domestic	95

Q34. Is the cost of Experience Tech (\$69 per semester) worth the value you gain?



Overall, how satisfied are you with Experience Tech?

Overall students say ...

70% they are satisfied

18% neither satisfied or unsatisfied

12% they are unsatisfied

Satisfied

Undergraduate 248

Graduate 30

International 22

Domestic 264

Unsatisfied

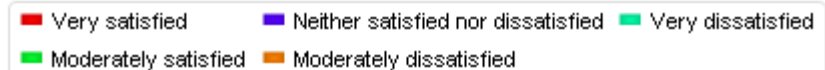
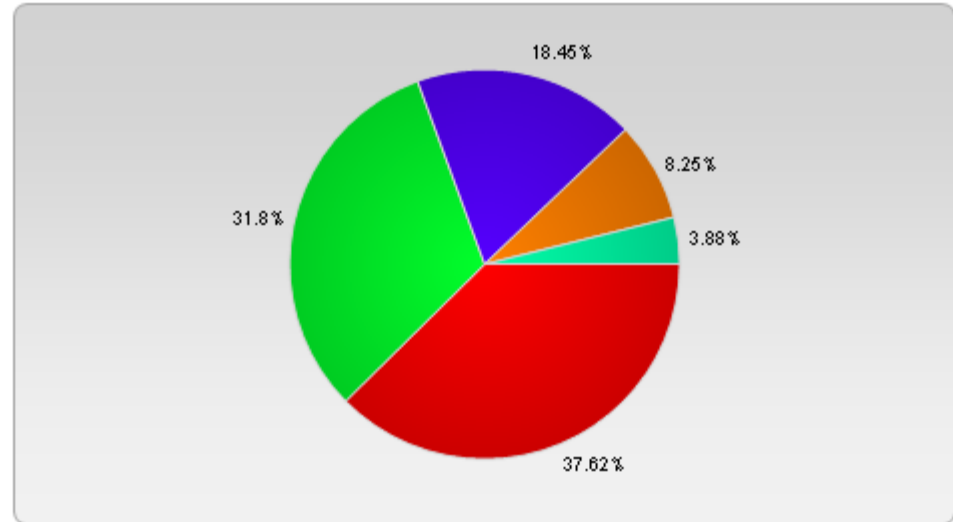
Undergraduate 37

Graduate 13

International 7

Domestic 43

Q35. Overall, how satisfied are you with Experience Tech?



Next time...

Guests from the Experience Tech Program group will present on proposed changes to the program & fees

Feedback? Thoughts?